

## EM-3534; Wireless Current Module Battery Replacement Instructions

Reference: Battery part number 540-113; Li-Poly 1000 mAH

Recommended Equipment: (PS-3299; Battery Replacement Tool Set)



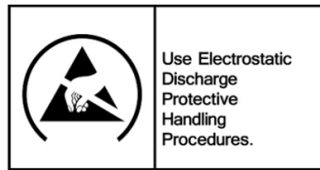
#0 or #00 Phillips Screwdriver



Replacement Battery



**CAUTION:** Failure to use proper ESD protection could result in damage to the electronics.



**Step 1:** Position the Sensor on the surface as shown. Note the location of the (4) Phillips Screws.



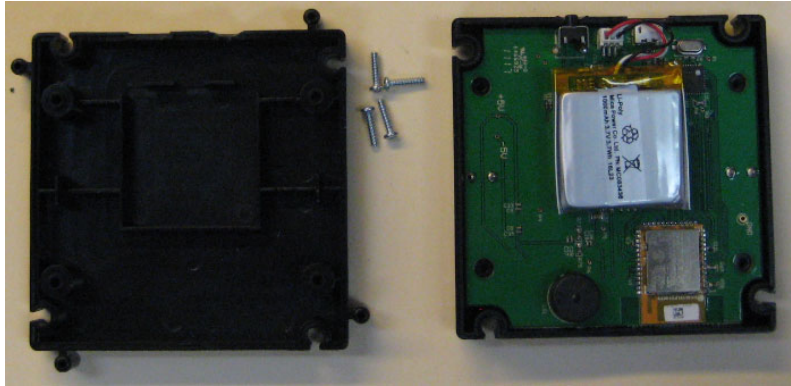
Phillips Screw,  
4 Places

**Step 2:** Unscrew and remove the 4 Screws with a Phillips Screwdriver.

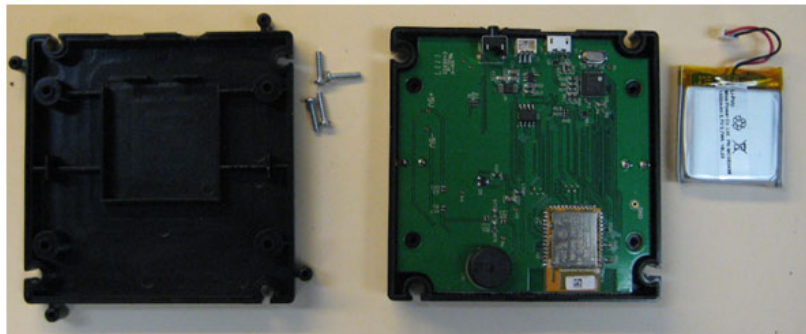


PASCO Form Number	Description	Date		Revision
013-16100	EM-3534 Battery Replacement Instructions	05-05-22	Page 1 of 2	B

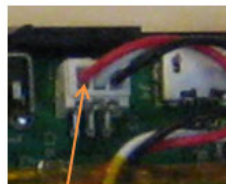
**Step 3:** Lift the back off of the product as shown.



**Step 4:** Unplug the battery from its connector. Remove the battery and add the replacement battery at the location shown and position the wiring similar to the routing shown. Plug the battery into its mating connector and reverse the steps noted above to complete the reassembly.



Battery connector



Note: red wire location

## Battery Replacement and Disposal Instructions (Reference):

Batteries contain chemicals that, if released, may affect the environment and human health. Batteries should be collected separately for recycling, and recycled at a local hazardous material disposal location adhering to your country and local government regulations. To find a battery recycling drop-off location, please contact local waste disposal service or the product representative.



The battery or batteries used in PASCO products are marked with the European Union symbol for waste batteries (above) to indicate the need for separate collection and recycling. For small batteries, the symbol is printed on the packaging.

If you need further assistance, please contact Technical Support at [support@pasco.com](mailto:support@pasco.com) or through [www.pasco.com](http://www.pasco.com) on chat. To access chat through your browser, please enable all cookies on our website.

PASCO Form Number	Description	Date		Revision
013-16100	EM-3534 Battery Replacement Instructions	05-05-22	Page 2 of 2	B