

## EM-3533; Wireless AC/DC Module Battery Replacement Instructions

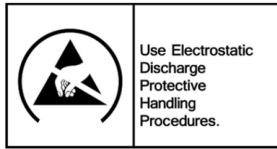
Reference: Battery part number 540-113; Li-Poly 1000 mAH

Recommended Equipment: (PS-3299; Battery Replacement Tool Set)

#0 OR #00 Phillips Screwdriver



**CAUTION:** Failure to use proper ESD protection could result in damage to the electronics.



**Step 1:** Position the Sensor on a surface as shown. Note the location of the (4) Phillips Screws. Remove the screws with a Phillips Screwdriver.

Qty=4 Phillips Screws

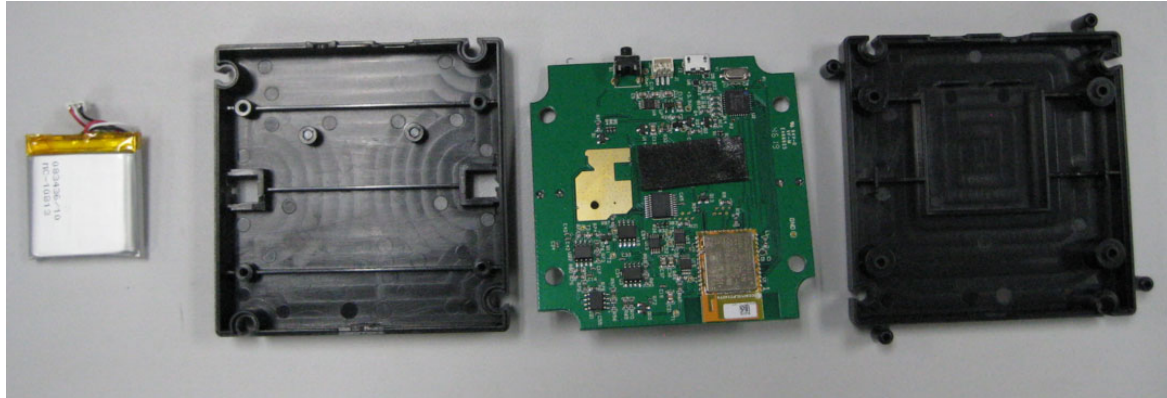


**Step 2:** Remove the bottom cover exposing the PC Board Assembly as shown below.

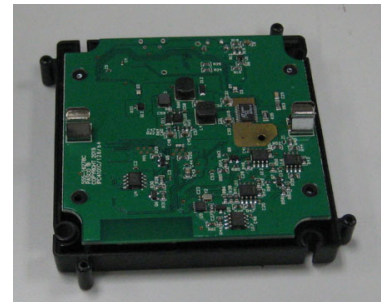
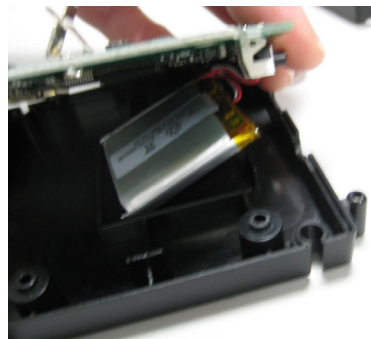
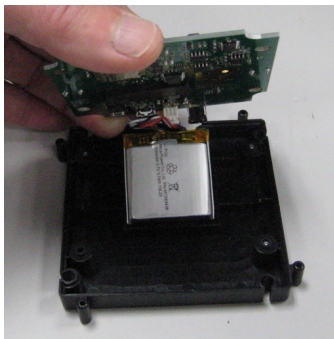


PASCO Form Number	Description	Date		Revision
013-17352	EM-3533 Battery Replacement Instructions	05-05-22	Page 1 of 3	A

**Step 3** Unplug the battery connector and set the battery off to the side. Remove the PC Board as shown below.



**Step 4:** Plug the replacement battery into the battery connector on the PC Board and carefully locate the battery into the bottom cover battery compartment as shown below. Lower the PCB into place.



**Step 5** Place the top cover over the assembly.



PASCO Form Number	Description	Date		Revision
013-17352	EM-3533 Battery Replacement Instructions	05-05-22	Page 2 of 3	A

**Step 6** While holding both halves together, flip the assembly over and secure the 4 mounting screws with the Phillips Screwdriver.



**Step 7:** Dispose of the old battery properly per the instructions below.

## Battery Replacement and Disposal Instructions (Reference):

Batteries contain chemicals that, if released, may affect the environment and human health. Batteries should be collected separately for recycling, and recycled at a local hazardous material disposal location adhering to your country and local government regulations. To find a battery recycling drop-off location, please contact local waste disposal service or the product representative.



The battery or batteries used in PASCO products are marked with the European Union symbol for waste batteries (above) to indicate the need for separate collection and recycling. For small batteries, the symbol is printed on the packaging.

If you need further assistance, please contact Technical Support at [support@pasco.com](mailto:support@pasco.com) or through [www.pasco.com](http://www.pasco.com) on chat. To access chat through your browser, please enable all cookies on our website.

PASCO Form Number	Description	Date		Revision
013-17352	EM-3533 Battery Replacement Instructions	05-05-22	Page 3 of 3	A