

## PS-3214: Wireless Drop Counter Replacement Instructions

Reference: Battery part number 540-113; Li-Poly 1000 mAH

Recommended Equipment: (PS-3299; Battery Replacement Tool Set)

Torx T5 Screwdriver

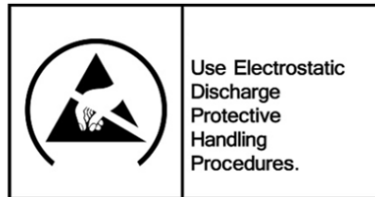
#0 or #00 Phillips Screwdriver



Replacement Battery



**CAUTION:** Failure to use proper ESD protection could result in damage to the electronics.



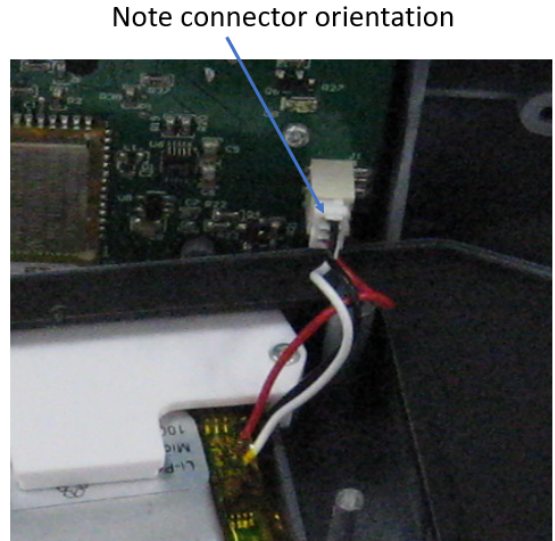
**Step 1:** Remove the 6 screws from the back of the unit with a Phillips Screwdriver.

Note: They will fall out when you flip it over.



PASCO Form Number	Description	Date		Revision
013-17355	PS-3214 Battery Replacement Instructions	05-05-22	Page 1 of 4	A

**Step 2:** Remove the two halves to expose the inside wiring.

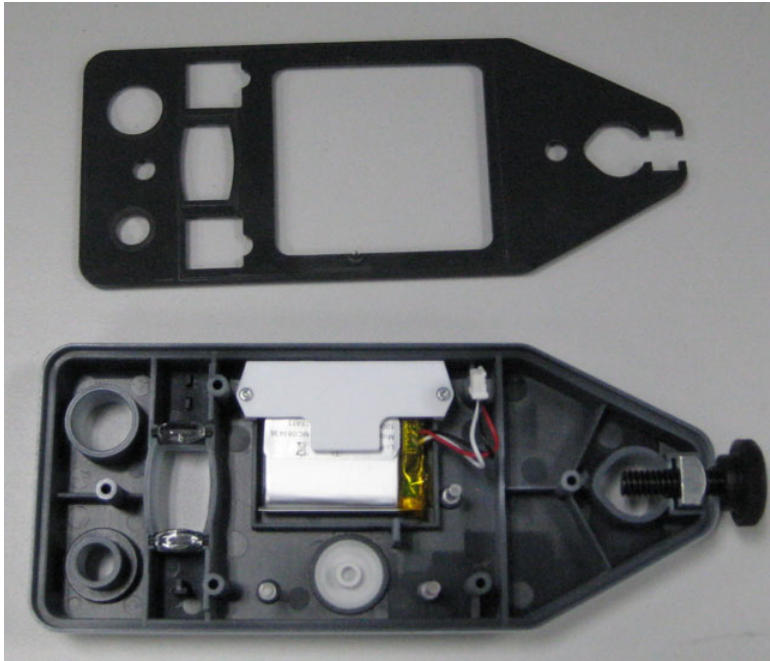


**Step 3:** Unplug the battery connector and position the two halves as shown.

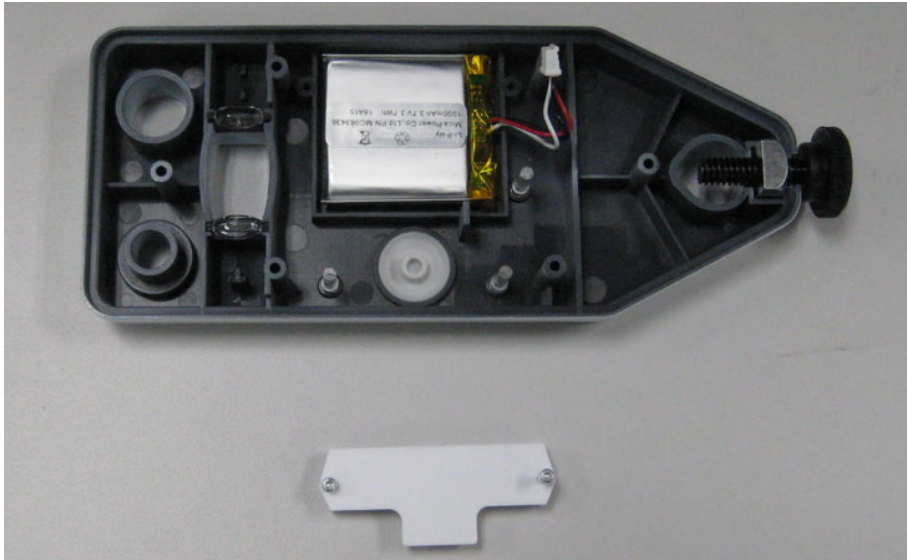


PASCO Form Number	Description	Date		Revision
013-17355	PS-3214 Battery Replacement Instructions	05-05-22	Page 2 of 4	A

**Step 4:** Remove the gasket as shown.



**Step 5:** Unscrew the battery hold down (2 screws) with a T5 Torx Screwdriver and remove.



PASCO Form Number	Description	Date		Revision
013-17355	PS-3214 Battery Replacement Instructions	05-05-22	Page 3 of 4	A

**Step 6:** Remove and replace the battery with the replacement part.



**Step 7:** Reverse the steps above and reassemble the unit. Dispose of the battery properly per the instructions below.



## Battery Replacement and Disposal Instructions (Reference):

Batteries contain chemicals that, if released, may affect the environment and human health. Batteries should be collected separately for recycling, and recycled at a local hazardous material disposal location adhering to your country and local government regulations. To find a battery recycling drop-off location, please contact local waste disposal service or the product representative.



The battery or batteries used in PASCO products are marked with the European Union symbol for waste batteries (above) to indicate the need for separate collection and recycling. For small batteries, the symbol is printed on the packaging.

If you need further assistance, please contact Technical Support at [support@pasco.com](mailto:support@pasco.com) or through [www.pasco.com](http://www.pasco.com) on chat. To access chat through your browser, please enable all cookies on our website.

PASCO Form Number	Description	Date		Revision
013-17355	PS-3214 Battery Replacement Instructions	05-05-22	Page 4 of 4	A