

PS-3219: Wireless Motion Battery Replacement Instructions

Reference: Battery part number 540-113; Li-Poly 1000 mAH

Recommended Equipment: (PS-3299; Battery Replacement Tool Set)



Torx T5 Driver



Replacement Battery



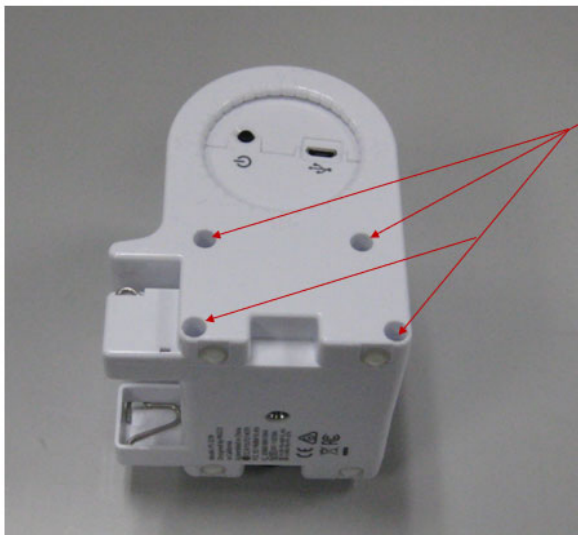
CAUTION: Failure to use proper ESD protection could result in damage to the electronics.



Use Electrostatic Discharge Protective Handling Procedures.

Step 1: Position the Sensor as shown. Note the location of the (4) T5 Screws.

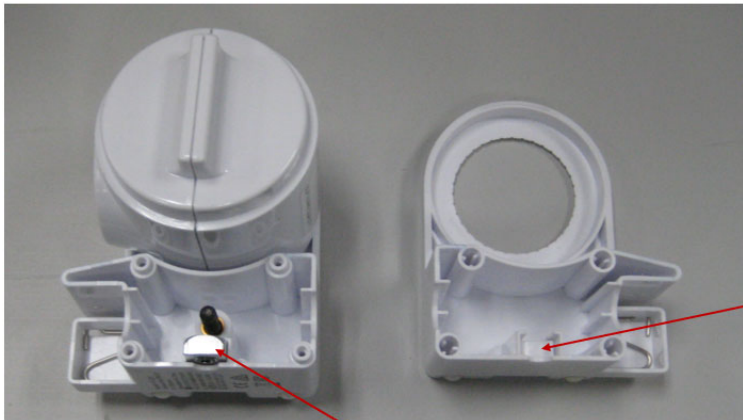
Unscrew the 4 screws.



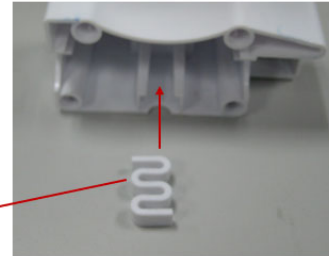
Qty=4
T-5 Torx Screws located from this side.

PASCO Form Number	Description	Date		Revision
013-17359	PS-3219 Battery Replacement Instructions	05-05-22	Page 1 of 4	A

Step 2: Flip over with the screws facing the ground and remove the top half. The screws should fall out. If not, shake until the screws fall out. Note the keepers/nut assembly may also fall out of their slot. Take note to put back during re-assembly.



Nut on top of 2nd keeper



Note: Nut keeper may fall out; put back when re-assembling.

Step 3: Remove the Motion Module from the assembly and unscrew the qty=4 short T5 screws as shown.

Motion Module



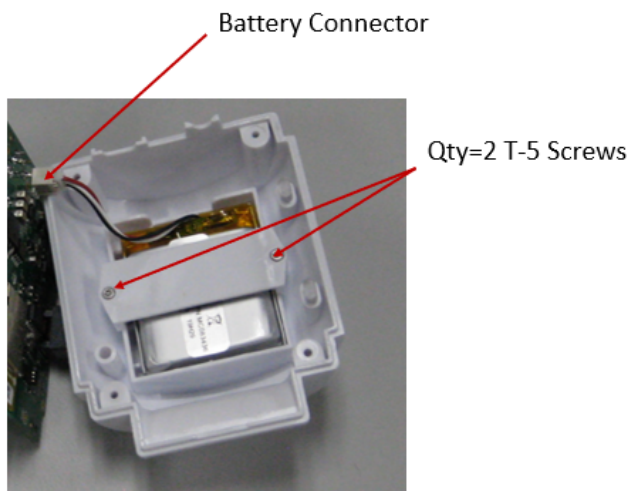
Qty=4 T-5 Screw location

PASCO Form Number	Description	Date		Revision
013-17359	PS-3219 Battery Replacement Instructions	05-05-22	Page 2 of 4	A

Step 4: Lift the top off and rotate as shown. Note: screws may stay inside their slots which is OK.

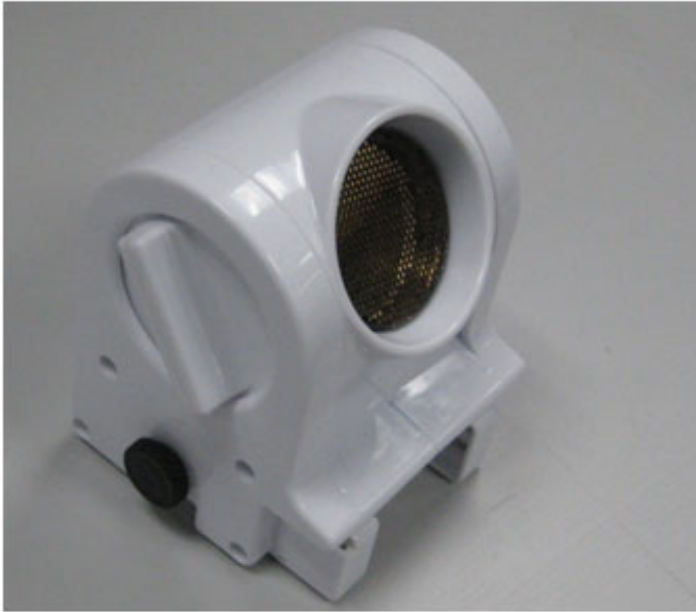


Step 5: Unscrew the qty=2 T5 Torx battery door screws as shown. Unplug the battery from its connector. Remove the battery and add the replacement battery at the location shown and plug the battery into its mating connector and put back and secure the battery door.



PASCO Form Number	Description	Date		Revision
013-17359	PS-3219 Battery Replacement Instructions	05-05-22	Page 3 of 4	A

Step 6: Reverse the steps noted above to complete the reassembly.
Dispose of the battery properly per the instructions.



Battery Replacement and Disposal Instructions (Reference):

Batteries contain chemicals that, if released, may affect the environment and human health. Batteries should be collected separately for recycling, and recycled at a local hazardous material disposal location adhering to your country and local government regulations. To find a battery recycling drop-off location, please contact local waste disposal service or the product representative.



The battery or batteries used in PASCO products are marked with the European Union symbol for waste batteries (above) to indicate the need for separate collection and recycling. For small batteries, the symbol is printed on the packaging.

If you need further assistance, please contact Technical Support at support@pasco.com or through www.pasco.com on chat. To access chat through your browser, please enable all cookies on our website.

PASCO Form Number	Description	Date		Revision
013-17359	PS-3219 Battery Replacement Instructions	05-05-22	Page 4 of 4	A