

PS-3228; Wireless Soil Moisture Sensor Battery Replacement

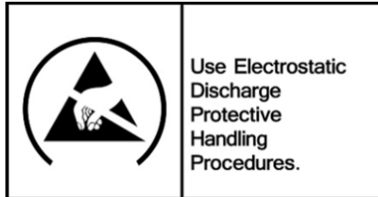
Instructions

Reference: Battery part number 540-115; Li-Poly 300 mAH

Recommended Equipment: (PS-3299; Battery Replacement Tool Set)



CAUTION: Failure to use proper ESD protection could result in damage to the electronics.



Use Electrostatic Discharge Protective Handling Procedures.



Torx T5 Driver



Replacement Battery

Step 1: Position the Sensor on a surface as shown. Unscrew and remove the 4 Torx Screws with the T5 Screwdriver

Qty=4 T5 Screws



PASCO Form Number	Description	Date		Revision
013-17365	PS-3228 Battery Replacement Instructions	05-05-22	Page 1 of 3	A



Step 2: Flip the unit over and position as shown.

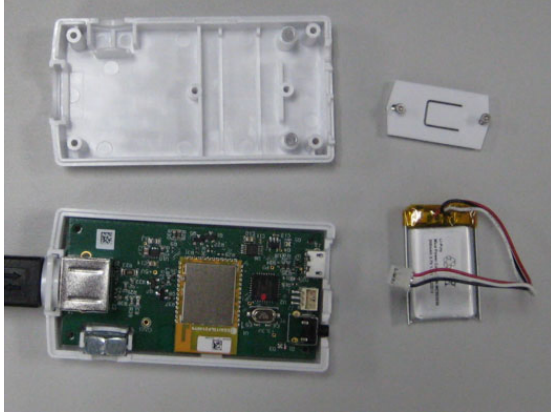


Step 3: Separate the two halves as shown.



PASCO Form Number	Description	Date		Revision
013-17365	PS-3228 Battery Replacement Instructions	05-05-22	Page 2 of 3	A

Step 4: Remove the battery hold down cover by removing the 2 screws with the Torx T5 Screwdriver. Unplug the battery and set aside.



Step 5: Replace the old battery with the replacement battery. Plug in the battery and reverse all steps to reassemble the unit. Dispose of the old battery properly per the instructions.



Battery Replacement and Disposal Instructions (Reference):

Batteries contain chemicals that, if released, may affect the environment and human health. Batteries should be collected separately for recycling, and recycled at a local hazardous material disposal location adhering to your country and local government regulations. To find a battery recycling drop-off location, please contact local waste disposal service or the product representative.



The battery or batteries used in PASCO products are marked with the European Union symbol for waste batteries (above) to indicate the need for separate collection and recycling. For small batteries, the symbol is printed on the packaging.

If you need further assistance, please contact Technical Support at support@pasco.com or through www.pasco.com on chat. To access chat through your browser, please enable all cookies on our website.

PASCO Form Number	Description	Date		Revision
013-17365	PS-3228 Battery Replacement Instructions	05-05-22	Page 3 of 3	A