

PS-3231; Wireless Code Node Battery Replacement Instructions

Reference: Battery part number 540-115; Li-Poly 300 mAh

Recommended Equipment: (PS-3299; Battery Replacement Tool Set)

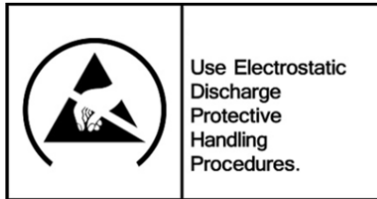
#0 or #00 Phillips Screwdriver



Replacement Battery



CAUTION: Failure to use proper ESD protection could result in damage to the electronics.



Use Electrostatic Discharge Protective Handling Procedures.

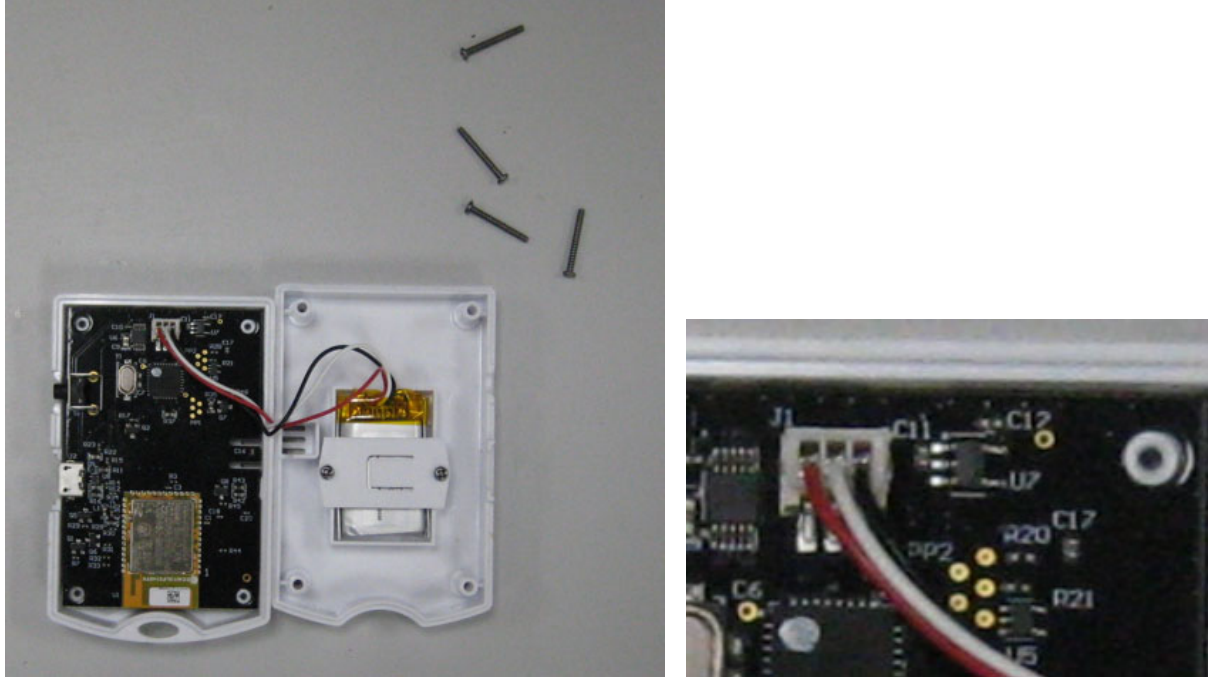
Step 1: Position the Sensor on a surface as shown. Note the location of the (4) Phillips Screws.

Qty=4 Phillips Head Screws



PASCO Form Number	Description	Date		Revision
013-17366	PS-3231 Battery Replacement Instructions	05-05-22	Page 1 of 3	A

Step 2: Unscrew and remove the 4 Phillips Screws with the Phillips Screwdriver. Separate the two halves as shown below.



Step 3: Remove the battery hold down cover by removing the two screws with a Phillips Screwdriver. Unplug the battery connector and set the battery aside.



PASCO Form Number	Description	Date		Revision
013-17366	PS-3231 Battery Replacement Instructions	05-05-22	Page 2 of 3	A

Step 4: Place the new battery in the battery compartment and secure by reattaching the battery hold down cover. Plug in the battery into the battery connector and reverse the steps noted above to complete the reassembly. Dispose of the old battery properly per the instructions below.

Battery Replacement and Disposal Instructions (Reference):



Batteries contain chemicals that, if released, may affect the environment and human health. Batteries should be collected separately for recycling, and recycled at a local hazardous material disposal location adhering to your country and local government regulations. To find a battery recycling drop-off location, please contact local waste disposal service or the product representative.



The battery or batteries used in PASCO products are marked with the European Union symbol for waste batteries (above) to indicate the need for separate collection and recycling. For small batteries, the symbol is printed on the packaging.

If you need further assistance, please contact Technical Support at support@pasco.com or through www.pasco.com on chat. To access chat through your browser, please enable all cookies on our website.

PASCO Form Number	Description	Date		Revision
013-17366	PS-3231 Battery Replacement Instructions	05-05-22	Page 3 of 3	A