

PS-3212; Wireless Current Sensor Battery Replacement Instructions

Battery part numbers referenced below.

Recommended Equipment: (PS-3299; Battery Replacement Tool Set)



Torx T5 Driver



PS-3296

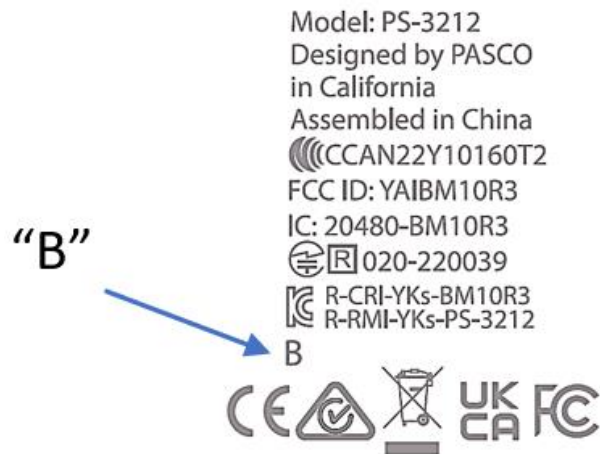
or



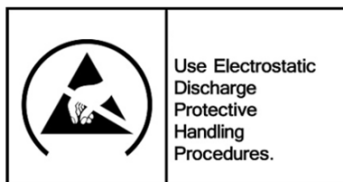
PS-3298 (B version)**

Replacement Batteries

**Note: Check the back side of the plastic enclosure of the PS-3212 you are using. If there is a “B” in the printing as shown below, then the replacement battery model number is PS-3298. If there is no “B” on the printing, the replacement battery is PS-3296.

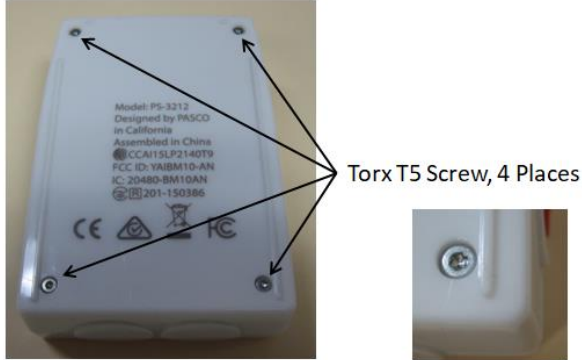


CAUTION: Failure to use proper ESD protection could result in damage to the electronics.



PASCO Form Number	Description	Date	Page	Revision
013-16109	PS-3212 Battery Replacement Instructions	11-28-22	Page 1 of 4	B

Step 1: Position the Sensor on a surface as shown. Note the location of the (4) Torx T5 Screws.



Step 2: Unscrew and remove the 4 Torx Screws with the T5 Screwdriver.



Step 3: While holding both halves together, flip the product over looking at the front as shown.



PASCO Form Number	Description	Date		Revision
013-16109	PS-3212 Battery Replacement Instructions	11-28-22	Page 2 of 4	B

Step 4: While holding the bottom with one hand, lift and rotate the top cover to the left.

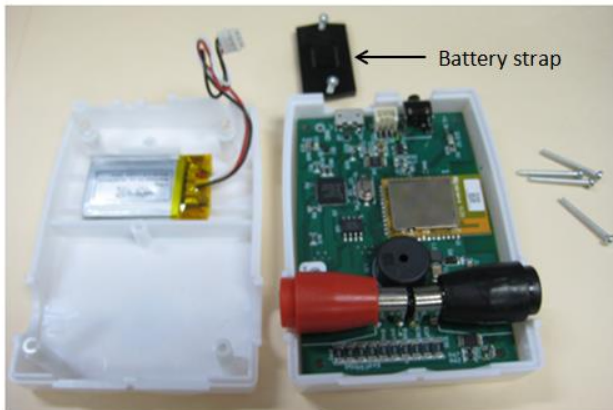


Battery connector

Note: red wire location



Step 5: Remove the battery strap screws (2) with the T5 Screwdriver and remove the battery strap. Unplug the battery from its connector. Remove the battery and add the replacement battery at the location shown (see above picture) and position the wiring similar to the routing shown above. Plug the battery into its mating connector and reverse the steps noted above to complete the reassembly.



Battery Replacement and Disposal Instructions (Reference):

Batteries contain chemicals that, if released, may affect the environment and human health. Batteries should be collected separately for recycling, and recycled at a local hazardous material disposal location adhering to your country and local government regulations. To find a battery recycling drop-off location, please contact local waste disposal service or the product representative.



The battery or batteries used in PASCO products are marked with the European Union symbol for waste batteries (above) to indicate the need for separate collection and recycling. For small batteries, the symbol is printed on the packaging.

PASCO Form Number	Description	Date		Revision
013-16109	PS-3212 Battery Replacement Instructions	11-28-22	Page 3 of 4	B

If you need further assistance, please contact Technical Support at support@pasco.com or through www.pasco.com on chat. To access chat through your browser, please enable all cookies on our website.

PASCO Form Number	Description	Date		Revision
013-16109	PS-3212 Battery Replacement Instructions	11-28-22	Page 4 of 4	B