

PS-3220; Wireless Rotary Motion Battery Replacement Instructions

Battery part numbers referenced below.



Torx T6 Driver



Mini Flat Blade Screwdriver



Torx T5 Driver



PS-3296



or PS-3298 (B version)**

Replacement Batteries

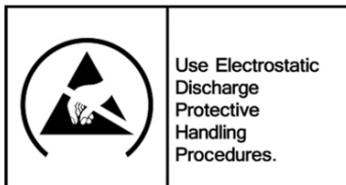
**Note: Check the back side of the plastic enclosure of the PS-3220 you are using. If there is a “B” in the printing as shown below, then the replacement battery model number = PS-3298. If there is no “B” on the printing, the replacement battery is PS-3296.

Model: PS-3220
Designed by PASCO
in California
Assembled in China
CCAN22Y10160T2
FCC ID: YAIBM10R3
IC: 20480-BM10R3
020-220039
R-CRI-YKs-BM10R3
R-RMI-YKs-PS-3220
B

“B”

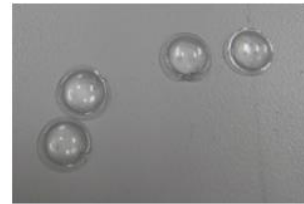


CAUTION: Failure to use proper ESD protection could result in damage to the electronics.



| PASCO Form Number | Description | Date | | Revision |
|-------------------|--|----------|-------------|----------|
| 013-17360 | PS-3220 Battery Replacement Instructions | 11-28-22 | Page 1 of 4 | A |

Step 1: Use a mini flat blade screwdriver to pry off and remove the Qty=4 rubber feet. Place on a non-stick surface for later reassembly.



Step 2: Unscrew and remove the 4 Torx Screws with the T6 Screwdriver.



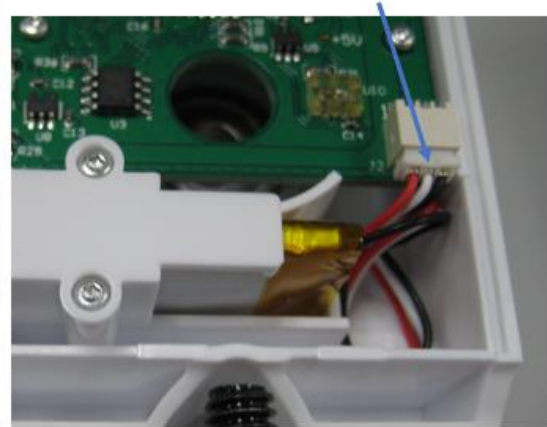
Qty=4 T6 Screws

| PASCO Form Number | Description | Date | | Revision |
|-------------------|--|----------|-------------|----------|
| 013-17360 | PS-3220 Battery Replacement Instructions | 11-28-22 | Page 2 of 4 | A |

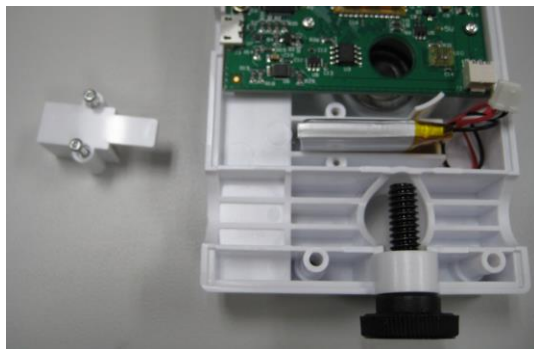
Step 3: Lift off the bottom section as shown.



Note battery connector orientation



Step 4: Remove the battery hold down cover (two screws) with a Torx T5 Screwdriver. Unplug the battery connector.



Step 5: Remove the old battery and add the replacement battery. Plug in the battery connector and position the wires as shown in the picture above. Reverse all steps to reassemble the unit.

Step 6: Complete the reassembly and dispose of the old battery properly per the instructions. Make sure that the rubber feet are pushed firmly in place.

| PASCO Form Number | Description | Date | | Revision |
|-------------------|--|----------|-------------|----------|
| 013-17360 | PS-3220 Battery Replacement Instructions | 11-28-22 | Page 3 of 4 | A |



Battery Replacement and Disposal Instructions (Reference):

Batteries contain chemicals that, if released, may affect the environment and human health. Batteries should be collected separately for recycling, and recycled at a local hazardous material disposal location adhering to your country and local government regulations. To find a battery recycling drop-off location, please contact local waste disposal service or the product representative.



The battery or batteries used in PASCO products are marked with the European Union symbol for waste batteries (above) to indicate the need for separate collection and recycling. For small batteries, the symbol is printed on the packaging.

If you need further assistance, please contact Technical Support at support@pasco.com or through www.pasco.com on chat. To access chat through your browser, please enable all cookies on our website.

| PASCO Form Number | Description | Date | | Revision |
|-------------------|--|----------|-------------|----------|
| 013-17360 | PS-3220 Battery Replacement Instructions | 11-28-22 | Page 4 of 4 | A |