

PS-3221; Wireless Magnetic Field Sensor Battery Replacement Instructions

Battery part numbers referenced below.

Recommended Equipment: (PS-3299; Battery Replacement Tool Set)



Torx T5 Driver



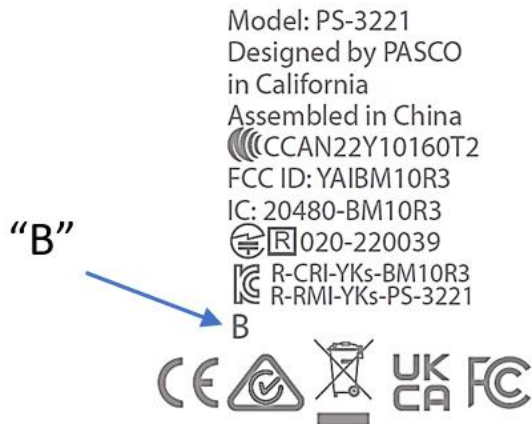
PS-3296



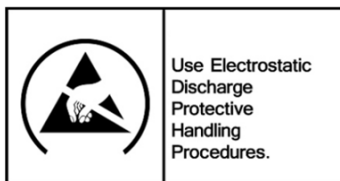
or PS-3298 (B version)**

Replacement Batteries

**Note: Check the back side of the plastic enclosure of the PS-3221 you are using. If there is a “B” in the printing as shown below, then the replacement battery model number is PS-3298. If there is no “B” on the printing, the replacement battery is PS-3296.



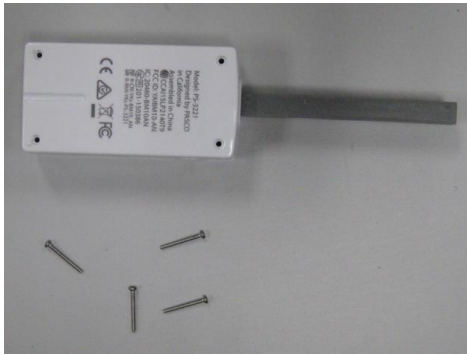
CAUTION: Failure to use proper ESD protection could result in damage to the electronics.



| PASCO Form Number | Description | Date | Page | Revision |
|-------------------|--|----------|-------------|----------|
| 013-17361 | PS-3221 Battery Replacement Instructions | 11-28-22 | Page 1 of 4 | A |

Step 1: Position the Sensor on a surface as shown. Unscrew and remove the 4 Torx Screws with the T5 Screwdriver

Qty=4 T5 Screws

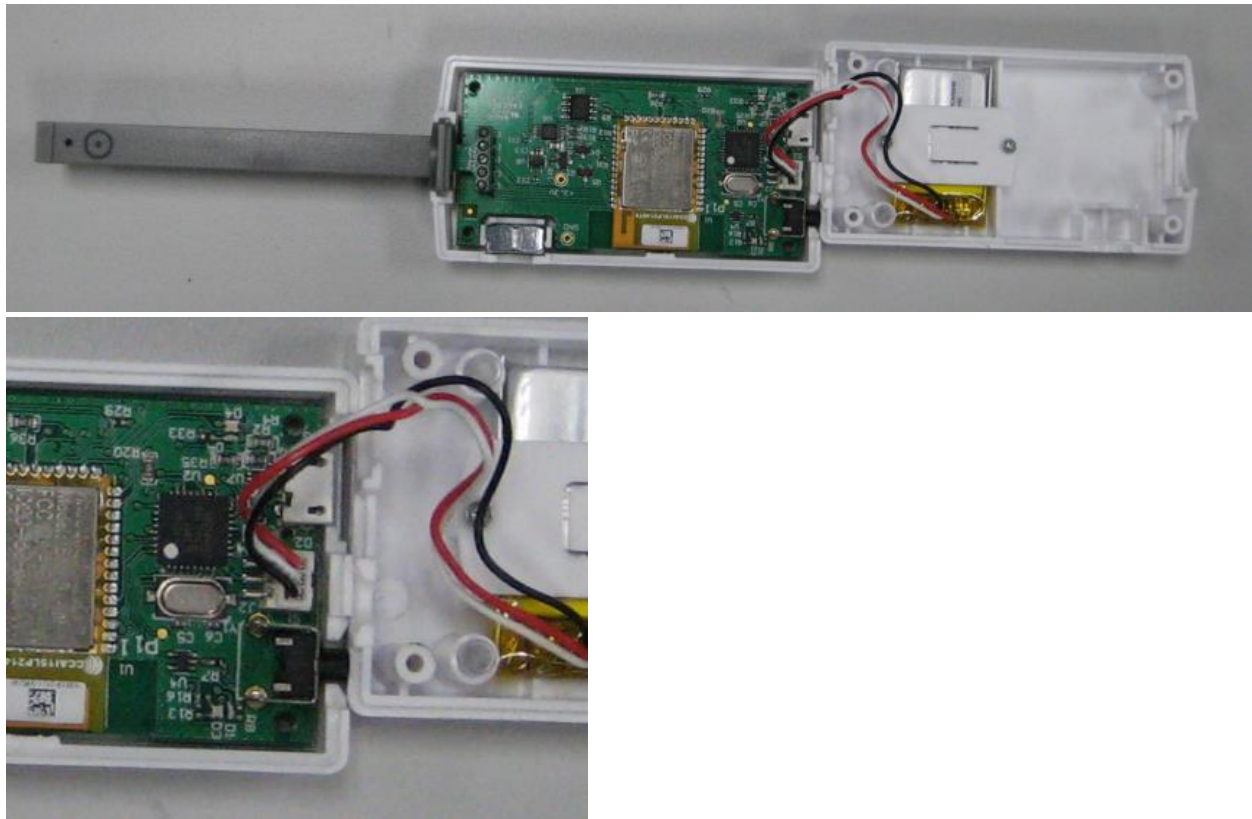


Step 2: Flip the unit over and position as shown.



| PASCO Form Number | Description | Date | | Revision |
|-------------------|--|----------|-------------|----------|
| 013-17361 | PS-3221 Battery Replacement Instructions | 11-28-22 | Page 2 of 4 | A |

Step 3: Separate the two halves as shown.



Step 4: Remove the battery hold down cover by removing the 2 screws with the Torx T5 Screwdriver. Unplug the battery and set aside.



Step 5: Replace the old battery with the replacement battery. Plug in the battery and reverse all steps to reassemble the unit.

| PASCO Form Number | Description | Date | | Revision |
|-------------------|--|----------|-------------|----------|
| 013-17361 | PS-3221 Battery Replacement Instructions | 11-28-22 | Page 3 of 4 | A |

Step 6: Complete the reassembly and dispose of the old battery properly per the instructions.



Battery Replacement and Disposal Instructions (Reference):

Batteries contain chemicals that, if released, may affect the environment and human health. Batteries should be collected separately for recycling, and recycled at a local hazardous material disposal location adhering to your country and local government regulations. To find a battery recycling drop-off location, please contact local waste disposal service or the product representative.



The battery or batteries used in PASCO products are marked with the European Union symbol for waste batteries (above) to indicate the need for separate collection and recycling. For small batteries, the symbol is printed on the packaging.

If you need further assistance, please contact Technical Support at support@pasco.com or through www.pasco.com on chat. To access chat through your browser, please enable all cookies on our website.

| PASCO Form Number | Description | Date | | Revision |
|-------------------|--|----------|-------------|----------|
| 013-17361 | PS-3221 Battery Replacement Instructions | 11-28-22 | Page 4 of 4 | A |