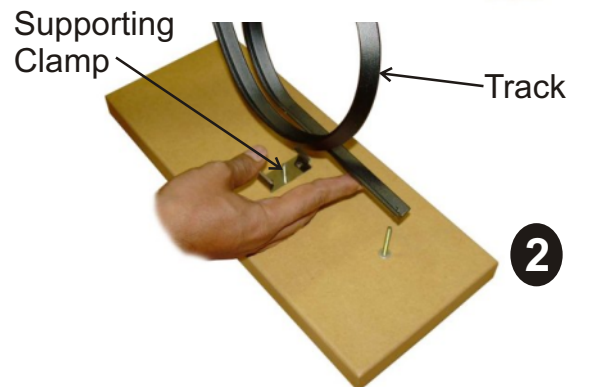


Loop the Loop Assembly Instruction

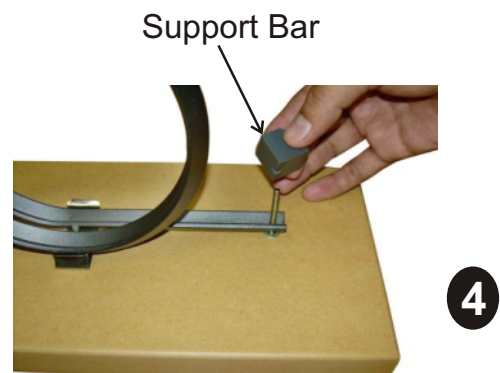
Picture - 1 Loop the loop apparatus shown in open position.



Picture - 2 Track put on base screw then push fit the track on supporting clamp as per Picture - 3.



Picture - 4 Insert the ball stopper on screw shown by keeping taper side down words.



Picture - 5 Tighten Fly nut on supporting bar.

